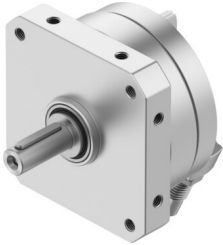


# Semi-rotary drive DSM-25-270-CC-A-B

Part number: 547580

FESTO



 General operating condition

## Data sheet

Feature	Value
Size	25
Cushioning angle	10 deg
Rotation angle adjustment range	0 deg ... 246 deg
Swivel angle	0 deg ... 246 deg
Permissible stop radius	≥21 mm
Cushioning	Shock absorber at both ends
Mounting position	optional
Fine adjustment	-3 deg
Mode of operation	Double-acting
Design	Vane
Position detection	Via proximity switch
Symbol	00991265
Operating pressure	0.15 MPa ... 1 MPa
Operating pressure	1.5 bar ... 10 bar
Max. swivel frequency at 0.6 MPa (6 bar, 87 psi)	1 Hz
Repetition accuracy	0.1 deg
Operating medium	Compressed air to ISO 8573-1:2010 [7:-:-]
Note on operating and pilot medium	Lubricated operation possible (in which case lubricated operation will always be required)
Corrosion resistance class CRC	0 - No corrosion stress
LABS (PWIS) conformity	VDMA24364-B1/B2-L
Ambient temperature	-10 °C ... 60 °C
Max. stop force	320 N
Max. axial force	50 N
Max. radial force	120 N
Theoretical torque at 0.6 MPa (6 bar, 87 psi)	5 Nm
Permissible mass moment of inertia	0.03 kgm <sup>2</sup>
Product weight	710 g
Type of mounting	Via female thread
Pneumatic connection	M5
Note on materials	RoHS-compliant
Material drive shaft	Steel Nickel-plated
Material seals	TPE-U(PU)
Material housing	Anodised aluminium