

DEK-OV- 5DC/ 24DC/ 3 - Solid-state relay terminal block



2941361

<https://www.phoenixcontact.com/us/products/2941361>

Please be informed that the data shown in this PDF document is generated from our online catalog. Please find the complete data in the user documentation. Our general terms of use for downloads are valid.



Power solid-state relay terminal block, input: 5 V DC, output: 3 - 30 V DC/3 A, terminal block width: 6.2 mm

Your advantages

- Actuator version available
- EB-DIK insertion bridges
- Labeling and mounting with user-friendly modular terminal blocks
- Wear-free switching of up to 24 V DC/10 A or 240 V AC/800 mA
- Integrated output protective circuit
- Status indicator
- Integrated input circuit
- Zero voltage switch at AC output
- Electrical isolation between input and output at up to 2.5 kVrms

Commercial data

Item number	2941361
Packing unit	10 pc
Minimum order quantity	1 pc
Sales key	C460
Product key	DK61A1
GTIN	4017918080389
Weight per piece (including packing)	22.2 g
Weight per piece (excluding packing)	18.1 g
Customs tariff number	85364190
Country of origin	CN

DEK-OV- 5DC/ 24DC/ 3 - Solid-state relay terminal block



2941361

<https://www.phoenixcontact.com/us/products/2941361>

Technical data

Notes

Note on application	Use of EB 80-DIK... bridges in the DEK terminal blocks: Absorption of humidity from the ambient air as well as an unfavorable tolerance between a larger number of DEK terminal blocks and the EB 80-DIK... bridge may cause (minor) expansion of the DEK housing. When the EB 80-DIK... bridges are used, therefore, it is recommended that these be disconnected after about 10 to 12 DEK terminal blocks and a wire bridge to the next DEK terminal block be inserted in their place.
---------------------	---

Product properties

Product type	Solid-state relay module
Product family	DEK
Application	Output function
Operating mode	100% operating factor

Insulation characteristics: Standards/regulations

Insulation	Basic insulation
Overvoltage category	III
Pollution degree	2

Data management status

Date of last data management	15.09.2025
------------------------------	------------

Electrical properties

Test voltage (Input/output)	2.5 kV AC (50 Hz, 1 min., input/output)
-----------------------------	---

Input data

Nominal input voltage U_N	5 V DC
Input voltage range in reference to U_N	0.8 ... 1.2
Input voltage range	4 V DC ... 6 V DC
Switching threshold "0" signal in reference to U_N	≤ 0.4
Switching threshold "1" signal in reference to U_N	≥ 0.8
Typical input current at U_N	11 mA
Typical response time	40 μ s
Typical turn-off time	200 μ s
Operating voltage display	Yellow LED
Protective circuit	Reverse polarity protection
Transmission frequency	300 Hz

Output data

Contact switching type	1 N/O contact
Design of digital output	electronic
Output voltage range	3 V DC ... 30 V DC
Limiting continuous current	3 A (see derating curve)

DEK-OV- 5DC/ 24DC/ 3 - Solid-state relay terminal block



2941361

<https://www.phoenixcontact.com/us/products/2941361>

Voltage drop at max. limiting continuous current	≤ 0.2 V
Output circuit	2-conductor, floating
Protective circuit	Reverse polarity protection; Polarity protection diode
	Surge protection

Connection data

Connection method	Screw connection
Stripping length	8 mm
Screw thread	M3
Conductor cross-section rigid	0.2 mm² ... 2.5 mm²
Conductor cross-section flexible	0.2 mm² ... 2.5 mm²
Conductor cross-section AWG	24 ... 14
Tightening torque	0.4 Nm ... 0.5 Nm

Dimensions

Width	6.2 mm
Height	80 mm
Depth	56 mm

Material specifications

Color	green (RAL 6021)
-------	------------------

Environmental and real-life conditions

Ambient conditions

Ambient temperature (operation)	-20 °C ... 60 °C
Ambient temperature (storage/transport)	-20 °C ... 70 °C

Standards and regulations

Standards/regulations

Standards/regulations	IEC 60947-5-1
-----------------------	---------------

Mounting

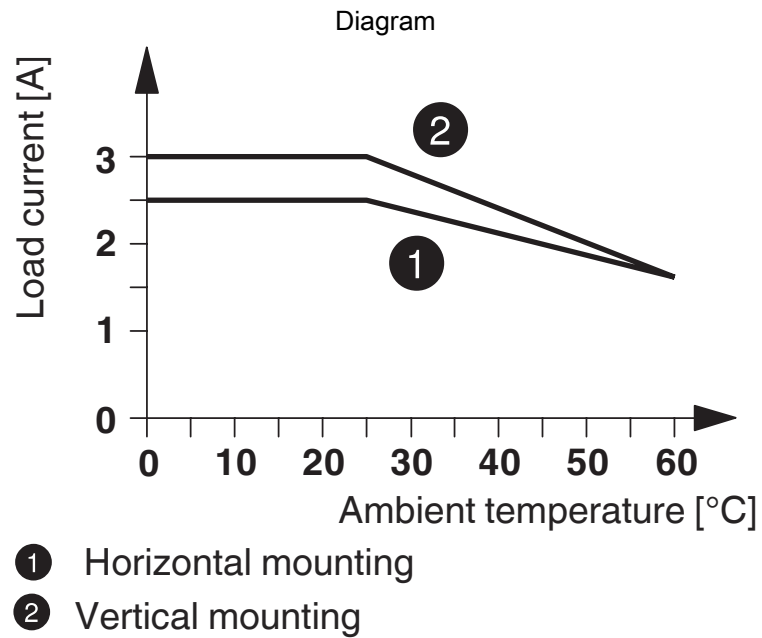
Mounting type	DIN rail mounting
Assembly note	in rows with zero spacing
Mounting position	any

DEK-OV- 5DC/ 24DC/ 3 - Solid-state relay terminal block

2941361

<https://www.phoenixcontact.com/us/products/2941361>

Drawings

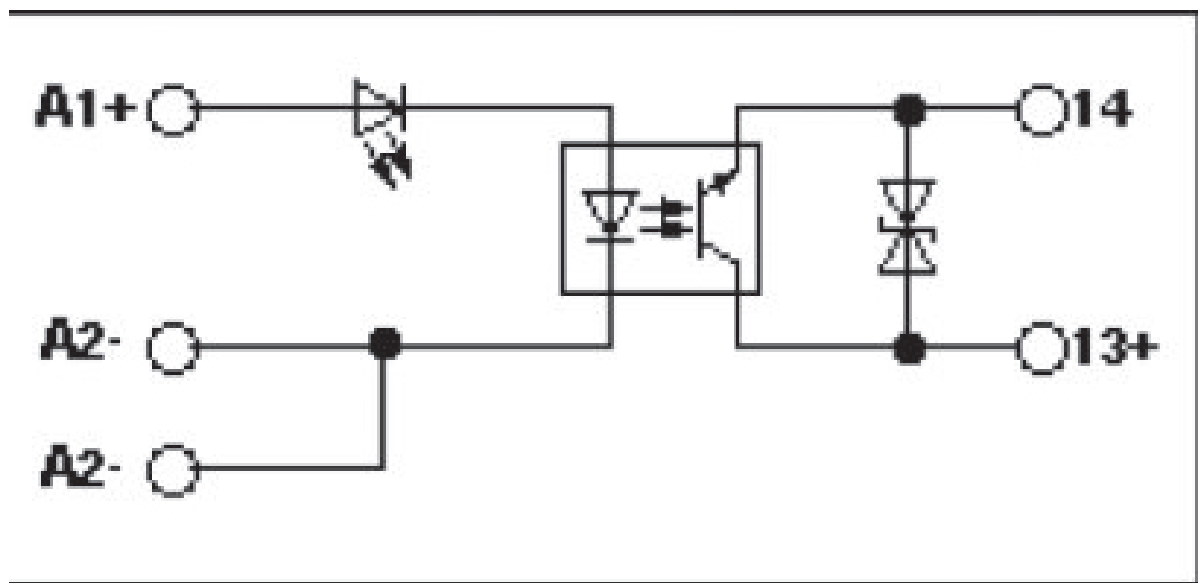


DEK-OV- 5DC/ 24DC/ 3 - Solid-state relay terminal block

2941361

<https://www.phoenixcontact.com/us/products/2941361>

Circuit diagram




DEK-OV- 5DC/ 24DC/ 3 - Solid-state relay terminal block



2941361

<https://www.phoenixcontact.com/us/products/2941361>

Approvals

 To download certificates, visit the product detail page: <https://www.phoenixcontact.com/us/products/2941361>



EAC

Approval ID: RU C-DE.A*30.B.01742



cULus Listed

Approval ID: E140324

DEK-OV- 5DC/ 24DC/ 3 - Solid-state relay terminal block



2941361

<https://www.phoenixcontact.com/us/products/2941361>

Classifications

ECLASS

ECLASS-13.0	27371604
ECLASS-15.0	27371604

ETIM

ETIM 9.0	EC001504
----------	----------

UNSPSC

UNSPSC 21.0	39122300
-------------	----------

DEK-OV- 5DC/ 24DC/ 3 - Solid-state relay terminal block



2941361
<https://www.phoenixcontact.com/us/products/2941361>

Environmental product compliance

EU RoHS	
Fulfills EU RoHS substance requirements	Yes
Exemption	7(a), 7(c)-I
China RoHS	
Environment friendly use period (EFUP)	EFUP-50
	An article-related China RoHS declaration table can be found in the download area for the respective article under "Manufacturer declaration". For all articles with EFUP-E, no China RoHS declaration table issued and required.
EU REACH SVHC	
REACH candidate substance (CAS No.)	Hexahydromethylphthalic anhydride(CAS: n/a)
	Lead(CAS: 7439-92-1)
SCIP	014c3b25-823e-4609-9b27-4108a86aa228

DEK-OV- 5DC/ 24DC/ 3 - Solid-state relay terminal block



2941361

<https://www.phoenixcontact.com/us/products/2941361>

Accessories

i Note: Applying some accessories below might limit this product.

EB 2- DIK RD - Insertion bridge

2716693

<https://www.phoenixcontact.com/us/products/2716693>



Insertion bridge, pitch: 6.15 mm, number of positions: 2, color: red

i Max. current carrying capacity: 26 A

EB 3- DIK RD - Insertion bridge

2716745

<https://www.phoenixcontact.com/us/products/2716745>



Insertion bridge, pitch: 6.15 mm, number of positions: 3, color: red

i Max. current carrying capacity: 26 A

DEK-OV- 5DC/ 24DC/ 3 - Solid-state relay terminal block



2941361

<https://www.phoenixcontact.com/us/products/2941361>

EB 4- DIK RD - Insertion bridge

2716758

<https://www.phoenixcontact.com/us/products/2716758>

Insertion bridge, pitch: 6.15 mm, number of positions: 4, color: red



 Max. current carrying capacity: 26 A

EB 5- DIK RD - Insertion bridge

2716761

<https://www.phoenixcontact.com/us/products/2716761>

Insertion bridge, pitch: 6.15 mm, number of positions: 5, color: red



 Max. current carrying capacity: 26 A

DEK-OV- 5DC/ 24DC/ 3 - Solid-state relay terminal block



2941361

<https://www.phoenixcontact.com/us/products/2941361>

EB 10- DIK RD - Insertion bridge

2716774

<https://www.phoenixcontact.com/us/products/2716774>



Insertion bridge, pitch: 6.15 mm, number of positions: 10, color: red

 Max. current carrying capacity: 26 A

EB 80- DIK RD - Insertion bridge

2715953

<https://www.phoenixcontact.com/us/products/2715953>



Insertion bridge, pitch: 6.2 mm, number of positions: 80, color: red

 Max. current carrying capacity: 26 A

DEK-OV- 5DC/ 24DC/ 3 - Solid-state relay terminal block



2941361

<https://www.phoenixcontact.com/us/products/2941361>


EB 5- DIK BU - Insertion bridge

2716677

<https://www.phoenixcontact.com/us/products/2716677>

Insertion bridge, pitch: 6.15 mm, number of positions: 5, color: blue



 Max. current carrying capacity: 26 A

EB 10- DIK BU - Insertion bridge

2716680

<https://www.phoenixcontact.com/us/products/2716680>

Insertion bridge, pitch: 6.15 mm, number of positions: 10, color: blue



 Max. current carrying capacity: 26 A

DEK-OV- 5DC/ 24DC/ 3 - Solid-state relay terminal block



2941361

<https://www.phoenixcontact.com/us/products/2941361>


EB 80- DIK BU - Insertion bridge

2715940

<https://www.phoenixcontact.com/us/products/2715940>

Insertion bridge, pitch: 6.2 mm, number of positions: 80, color: blue



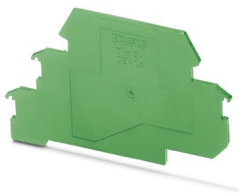
 Max. current carrying capacity: 26 A

D-DEK 1,5 GN - Separating plate

2716949

<https://www.phoenixcontact.com/us/products/2716949>

Cover for setting the end of a terminal row, color: green



DEK-OV- 5DC/ 24DC/ 3 - Solid-state relay terminal block

2941361

<https://www.phoenixcontact.com/us/products/2941361>

ZB 6:UNBEDRUCKT - Zack marker strip

1051003

<https://www.phoenixcontact.com/us/products/1051003>



Zack marker strip, Strip, white, unmarked, can be labeled with: PLOTMARK, CMS-P1-PLOTTER, mounting type: latching, for terminal block width: 6.2 mm, Number of individual labels: 10, text field height: 10.5 mm, text field width: 6.15 mm

ZB 6,LGS:FORTL.ZAHLEN - Zack marker strip

1051016

<https://www.phoenixcontact.com/us/products/1051016>



Zack marker strip, Strip, white, labeled, can be labeled with: CMS-P1-PLOTTER, printed horizontally: consecutive numbers 1 ... 10, 11 ... 20, etc. up to 491 ... 500, mounting type: latching, for terminal block width: 6.2 mm, Number of individual labels: 10, text field height: 10.5 mm, text field width: 6.15 mm

DEK-OV- 5DC/ 24DC/ 3 - Solid-state relay terminal block



2941361

<https://www.phoenixcontact.com/us/products/2941361>

ZB 6/WH-100:UNBEDRUCKT - Zack marker strip

5060935

<https://www.phoenixcontact.com/us/products/5060935>



Zack marker strip, Strip, white, unmarked, can be labeled with: PLOTMARK, CMS-P1-PLOTTER, mounting type: latching, for terminal block width: 6.2 mm, Number of individual labels: 1000, text field height: 10.5 mm, text field width: 6.15 mm

DIKD 1,5 - Initiator/actuator terminal block

2715979

<https://www.phoenixcontact.com/us/products/2715979>



Initiator/actuator terminal block, nom. voltage: 250 V, nominal current: 24 A, connection method: Screw connection, 1st, 2nd and 3rd level, Rated cross section: 2.5 mm², cross section: 0.2 mm² - 4 mm², mounting type: NS 35/7,5, NS 35/15, color: gray

Phoenix Contact 2025 © - all rights reserved

<https://www.phoenixcontact.com>

Phoenix Contact USA
586 Fulling Mill Road
Middletown, PA 17057, United States
(+717) 944-1300
info@phoenixcon.com